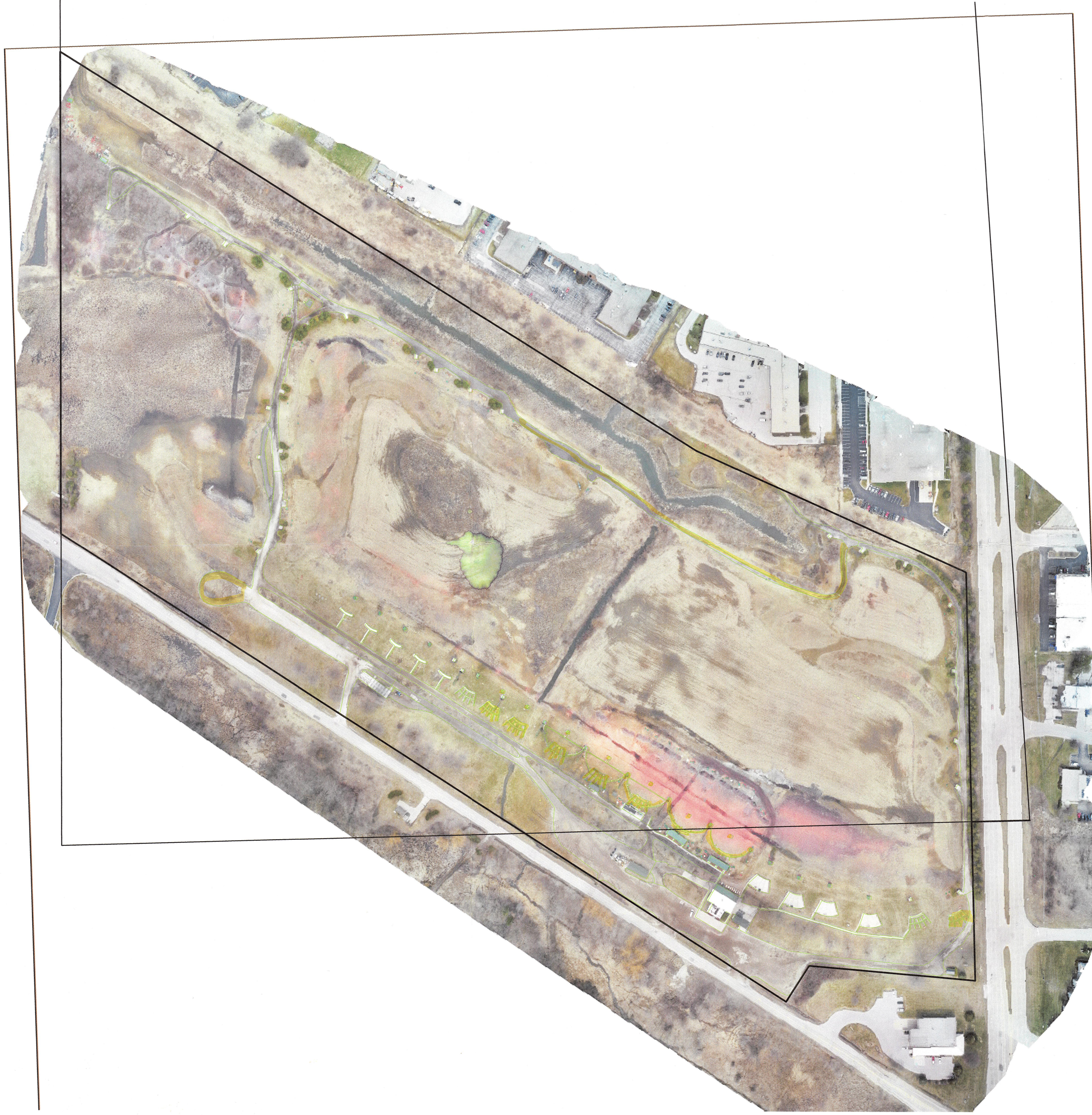
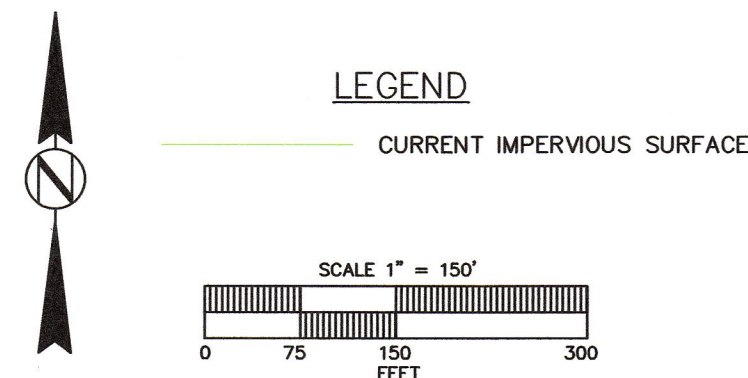


BASED ON THE AREAL PHOTO FLOWN APRIL 2023 THE IMPERVIOUS SURFACE = 296,208 SF OR 6.80 AC



CURRENT IMPERVIOUS SURFACE PLAN

WAUKESHA GUN CLUB  
SE 1/4 S14, T7N, R9E, CO PEWAULKEE, WAUKESHA CO. WI

Lake Country Engineering, Inc.

Consulting Engineers - Surveyors  
970 S. Silver Lake Street, Suite 105, Oconomowoc, WI 53066  
Phone (262) 569-9331 Fax (262) 569-9316

SCALE: 1" = 150'  
DRAFTED BY: RJD  
CHECKED BY: RJBAY  
DATE: JULY 20, 2023

REVISION DATE	REMARKS

PROJ. #  
21-3419  
SHEET #  
2 OF 2